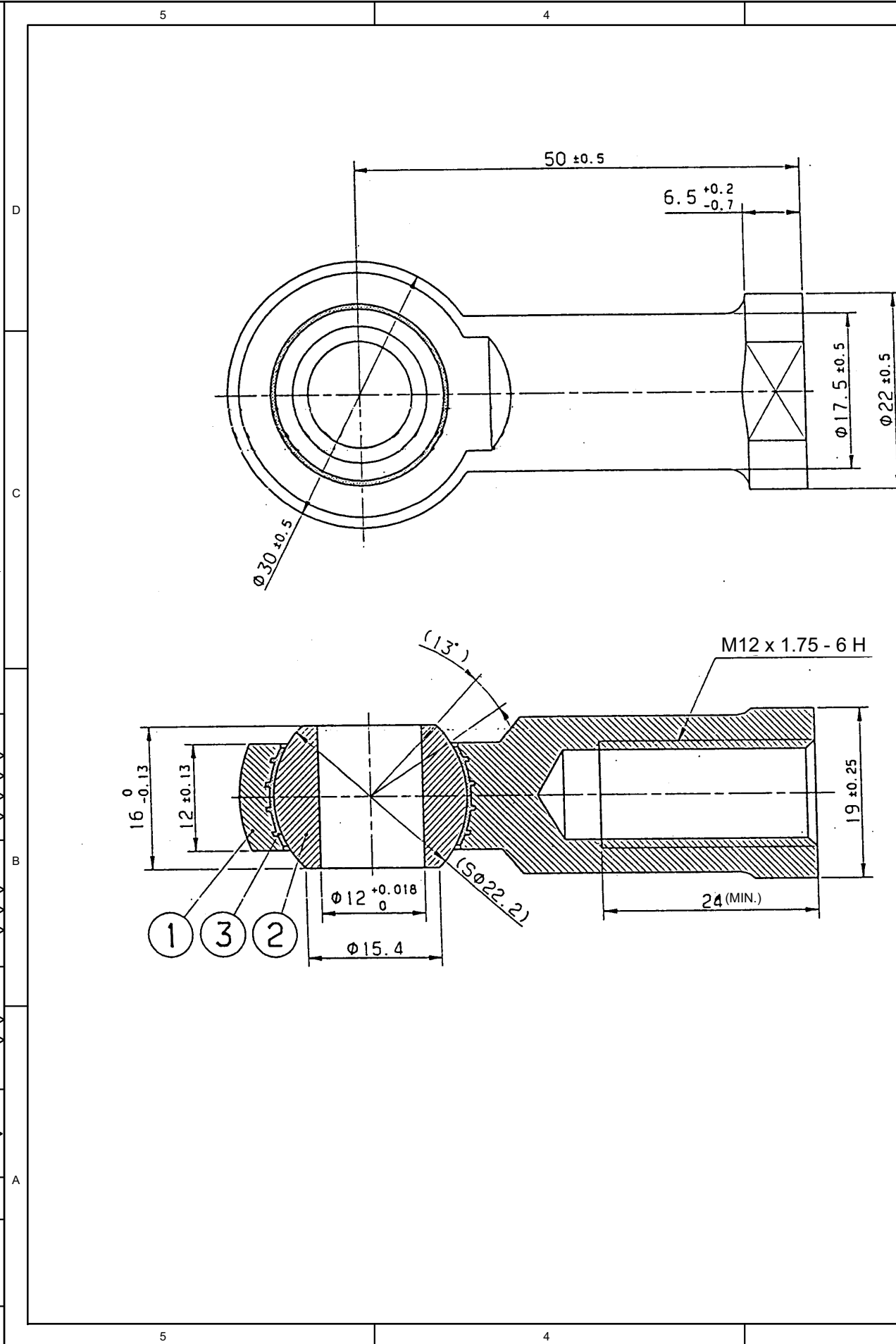


GRADE No.	N12	N11	N10	N9	N8	N7	N6	N5	N4	N3	N2	N1
VALUE	50	25	12.5	6.3	3.2	1.6	0.8	0.4	0.2	0.1	0.05	0.025
SYMBOL												



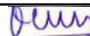



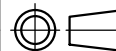




		2					1			
MACHINING DEVIATIONS FOR LINEAR DIMENSIONS	RANGE	0 - 6	6 - 30	30 - 120	120 - 315	315-1000	1000-2000	2000-4000	ABOVE 4000	RA
	TOLERANCE	±0.1	±0.2	±0.3	±0.5	±0.8	±1.2	±2	±3	~
FOR DIMENSIONAL TOLERANCES OF SHEET METAL PARTS AND WELDED STRUCTURES, REFER STD. RD-227										
UNSPECIFIED TOLERANCE FOR LINEAR AND ANGULAR DIMENSIONS REF. IS 2102 (PT-1) (MEDIUM)							QUALITY OF WELD JOINTS REF. RD 230 MEDIUM			
VALUES OF SURFACE TEXTURE SHALL BE AS PER COMPANY STD DS. 1012.C							STATUS:	MOCKUP/PROTO/PRODUCTION		
WELDING SHALL BE CARRIED OUT AS PER IS: 9595-96										

NOTE:-

1. SURFACE FINISH : BALL SPH. O.D 0.2  $\mu$  Ra.  
: BALL I.D. AND ENDS 0.8  $\mu$  Ra.  
: ALL OTHER MACHINE SURFACES 3.2  $\mu$  Ra.  
: FORGING SURFACE ✓
2. DIMENSIONS ARE IN METRIC. ALL DIMENSIONS SHALL BE MET AFTER PLATING.
3. NO BURRS, NICKS, RUST ARE ALLOWED
4. PACKAGE : BEARING SHALL BE SHIPPED COATED WITH LUBE OIL AND  
PACKAGED IN SEALED POLY BAGS WITH PROPER PACKING  
TO AVOID TRANSIT DAMAGES.
5. LOAD CAPACITY : DYNAMIC LOAD : 6.52 kN  
: RADIAL STATIC LIMIT LOAD : 18.14 kN
7. NO LOAD ROTATIONAL BREAKAWAY TORQUE : 0.12 N.m MAX
8. CLEARANCE : R / P 0.05 mm MAX.
9. APPROX WEIGHT : 120 g

**UN CONTROLLED COPY**

3	1		HOLD LINER				MINELON / PTF					
2	1		BALL				BEARING STEEL-EN31 WITH HARD CHROME PLATING 5μ MIN, HRC-56 MIN.					
1	1		BODY				STEEL-EN8, WITH Zn PLATING 12.5μ MIN.					
SL.No.	QTY	PART / STOCK No.				DESCRIPTION			SIZE	COMPANY STD./I.S	Wt. (Kg)	
MATERIAL												
						PRODUCT	BMRCL METRO CARS					
						REF DRG						
						MATERIAL						
						HEAT TREAT.	APPD	MS		21.08.2019		
						SURFACE TREAT.	REVD	DB		19.08.2019		
						TITLE	CHKD	JC		17.08.2019		
						ROD END BEARING	DRWN	ILYAS				
							SCALE		SHEET	Wt.(Kg)		
							NTS	1 OF 1	-			
ALT.NO.	ECN NO/CHANGES					DATE	BY	CHKD	APPD	 BEML LIMITED NEW PRODDING - NEW GROUND		
										DRG No.	926-84119	ALT 